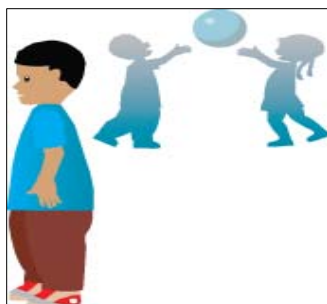


# Child Health Notes

Promoting early identification and partnerships between families, primary health care providers & the community.

Distributed by the Lewis County Interagency Coordinating Council (ICC) and Parent to Parent.

Contributors: UW Center on Human Development and Disability and Washington State Department of Health



**To date the only supported effective treatment strategies are early, intensive behavioral intervention.**

- - UW Center on Human Development and Disabilities

More information on Autism in the March April 2009 newsletter at [www.reliableenterprises.org/newsletters.html](http://www.reliableenterprises.org/newsletters.html)



**PARENT to PARENT**

Office: (360) 736-9558

Cell: (360) 269-2269

email:

[rbryan@reliableenterprises.org](mailto:rbryan@reliableenterprises.org)



Infant Toddler Early Intervention Program (ITEIP)



## APRIL IS AUTISM AWARENESS MONTH:

### EARLY IDENTIFICATION MAKES A DIFFERENCE

Autism spectrum disorders (ASDs) are chronic neuro-developmental conditions characterized by impaired social interactions and communication skills, and restricted/repetitive behaviors and interests. Most affected children fall within one of three specific ASD diagnoses. These include: Autistic Disorder; Asperger's Disorder; and, Pervasive Developmental Disorder - Not Otherwise Specified (PDD NOS). ASDs are 3 to 4 times more common in males than females, and affect 1 in 150 children according to a 2007 report by the Centers for Disease Control and Prevention. ([www.cdc.gov/od/oc/media/pressrel/2007/r070208.htm](http://www.cdc.gov/od/oc/media/pressrel/2007/r070208.htm))

Signs of autism include:

- decreased reciprocal social interaction
- poor use of eye contact
- speech delays/oddities
- impaired peer relations
- resistance to environmental change or change in daily routines
- stereotyped motor mannerisms (e.g. hand flapping or finger posturing)
- sensory sensitivities

Children with ASDs are also at increased risk for seizures and disturbances in gastrointestinal, sleep, behavior and motor systems. To date the only supported effective treatment strategies are early, intensive behavioral intervention.

### Red Flags for ASDs

The average age of diagnosis is 3 to 4 years. Yet some children with ASDs can be diagnosed as early as 14 months of age and many studies have found that red flags are evident very early in life. Some red flags include:

- Little or no babbling/cooing by 9-12 months
- No response when own name called
- Decreased to-and-fro babbling
- Reduced gesturing (pointing, waving bye-bye, clapping, etc) by 12 months of age
- No single words by 16 months of age

- Lack of appropriate eye gaze
- No initiation or response to another person's attempts to share attention to an object or event. (e.g. follow a pointing finger)
- Delayed or ritualistic play skills
- Loss of any language of social skills at any age

*Continued on back*

## AUTISM INFORMATION AND RESOURCES

### Centers for Diagnostic ASD Evaluation in Washington State:

- ◆ UNIVERSITY OF WASHINGTON, CENTER ON HUMAN DEVELOPMENT AND DISABILITY  
Autism Center 206-221-6806  
Child Development Clinic 206-598-3327
- ◆ UNIVERSITY OF WASHINGTON, AUTISM RESEARCH PROGRAM 1-800-994-9701  
<http://depts.washington.edu/uwautism/research/index.html>  
\*\*\* Currently enrolling families who fit study criteria \*\*\*
- ◆ CHILDREN'S HOSPITAL AND REGIONAL MEDICAL CENTER, SEATTLE  
Clinical Intake Department.....206-987-2080  
[www.seattlechildrens.org/health\\_care\\_professionals/access](http://www.seattlechildrens.org/health_care_professionals/access)
- ◆ MARY BRIDGE CHILDREN'S HOSPITAL, TACOMA.....1-800-552-1770
  
- ◆ American Academy of Pediatrics <http://www.aap.org/healthtopics/autism.cfm>
- ◆ Autism Speaks: ASD Video Glossary [www.autismspeaks.org](http://www.autismspeaks.org)
- ◆ Autism Alarm Fact Sheet [www.medicalhomeinfo.org](http://www.medicalhomeinfo.org)
- ◆ Autism Info Center, CDC [www.cdc.gov/ncbddd/autism/index.htm](http://www.cdc.gov/ncbddd/autism/index.htm)
- ◆ National Library of Medicine, Medline plus: Autism [www.nlm.nih.gov/medlineplus/autism.html](http://www.nlm.nih.gov/medlineplus/autism.html)
- ◆ NIH Autism Fact Sheet [www.nichd.nih.gov/health/topics/asd.cfm](http://www.nichd.nih.gov/health/topics/asd.cfm)
- ◆ WA State Medical Home Website [www.medicalhome.org/diagnoses/autism.cfm](http://www.medicalhome.org/diagnoses/autism.cfm)
- ◆ Northwest Autism Center [www.nwautism.org](http://www.nwautism.org)

### Family Resources

- ◆ **State/Local:** Families for Effective Autism Treatment (FEAT) of Washington [www.featwa.org](http://www.featwa.org)  
Parent to Parent Support Program 360-736-9558
- ◆ **National:** Autism Society of America [www.autism-society.org/site/PageServer](http://www.autism-society.org/site/PageServer)

Autism Speaks [www.autismspeaks.org](http://www.autismspeaks.org)  
First Signs: *Could it Be Autism?*  
*A Parent's Guide to the First Signs and Next Steps* [www.firstsigns.org](http://www.firstsigns.org)

### LOCAL RESOURCES FOR DEVELOPMENTAL SCREENING AND ASSESSMENT:

<b>For children under age three:</b> In any Lewis County School District In Centralia or Chehalis School District only	<b>Contact:</b> In-tot Developmental Center 748-4359 or 1-888-548-4359 Growing Together 748-2277 or Student Support 807-7245
<b>For children age three and older:</b> Within Centralia Chehalis School Districts Outside Centralia Chehalis School Districts	<b>Contact:</b> Local school district Lewis County Special Education Coop 748-3384 or local elementary school

**Disclosure:** We release, absolve, indemnify and hold harmless the City of Centralia and the Centralia School District which does not sponsor this information and assumes no responsibility for it. In consideration of the privilege to distribute materials, The Centralia school district and City of Centralia shall be held harmless from any cause of action filed in any court or administrative tribunal arising out of distribution of these materials, including costs, attorney's fees and judgements or awards.